

DRAWING NUMBER
58/120

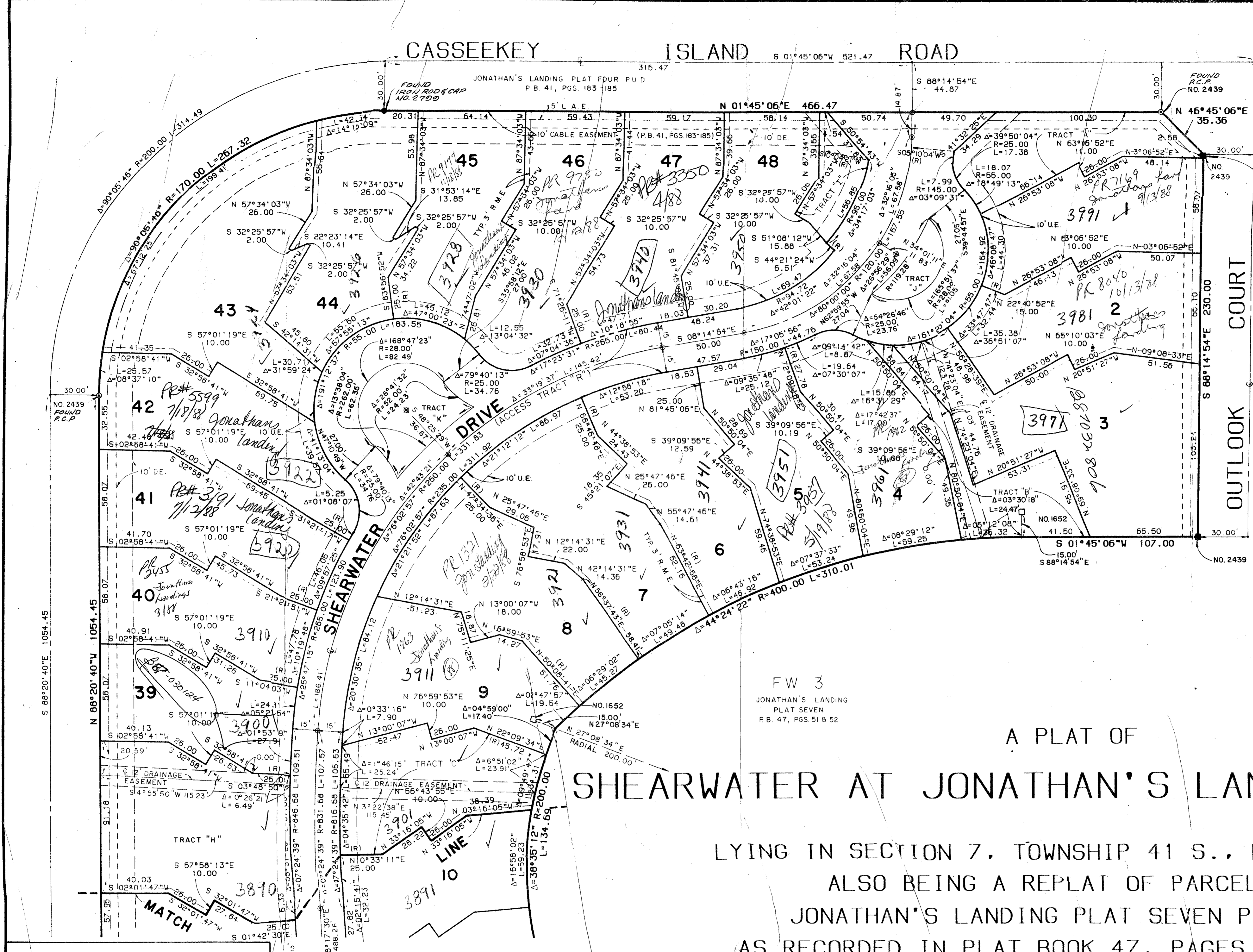
DRAWING NUMBER

DRAWING NUMBER

DRAWING NUMBER

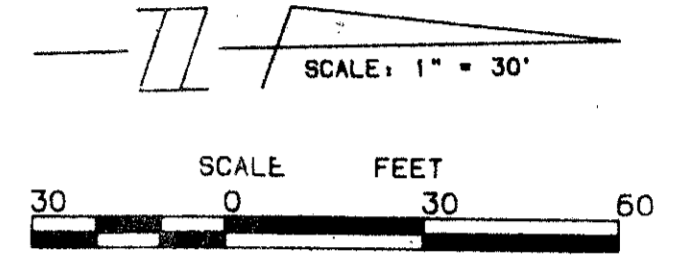
120

CASSEEKEY ISLAND ROAD



JONATHAN'S LANDING PLAT NO. 7 P.B. 47, P.G. 51

OUTLOOK COURT



THIS PLAT PREPARED BY STEVEN C. MITCHELL FOR LINDAHL, BROWNING, FERRARI & HELLSTROM, INC.

NOTES: BEARING BASE: THE CENTERLINE OF OUTLOOK COURT IS TAKEN TO BEAR S 88°14'54"E AND ALL OTHER BEARINGS ARE RELATIVE THERETO.

- = PERMANENT REFERENCE MONUMENT (P.R.M.) FOUND.
□ = PERMANENT REFERENCE MONUMENT (P.R.M.) SET.
⊙ = PERMANENT CONTROL POINT (P.C.P.)
U.E. = UTILITY EASEMENT
D.E. = DRAINAGE EASEMENT
L.A.E. = LIMITED ACCESS EASEMENT
WMME = WATER MANAGEMENT MAINTENANCE EASEMENT
THERE SHALL BE NO BUILDINGS OR STRUCTURES PLACED ON UTILITY EASEMENTS.
THERE SHALL BE NO BUILDINGS OR THE PLANTING OF TREES OR SHRUBS ON DRAINAGE EASEMENTS.
WHEN DRAINAGE AND UTILITY EASEMENTS CROSS, DRAINAGE EASEMENTS SHALL TAKE PRECEDENCE.
R.M.E. = RECIPROCAL MAINTENANCE EASEMENT
(R) = RADIAL LINES
BUILDING SETBACKS AND SEPARATION SHALL CONFORM TO APPLICABLE REQUIREMENTS OF THE PALM BEACH COUNTY ZONING CODE.
LANDSCAPING ON UTILITY EASEMENTS OTHER THAN FOR SEWER AND WATER SHALL REQUIRE PRIOR APPROVAL OF ALL UTILITIES OCCUPYING SAME.

FW 3 JONATHAN'S LANDING PLAT SEVEN P.B. 47, PGS. 51 & 52

A PLAT OF SHEARWATER AT JONATHAN'S LANDING P.U.D.,

LYING IN SECTION 7, TOWNSHIP 41 S., RANGE 43 E., ALSO BEING A REPLAT OF PARCEL "O" JONATHAN'S LANDING PLAT SEVEN P.U.D., AS RECORDED IN PLAT BOOK 47, PAGES 51 AND 52. PUBLIC RECORDS OF PALM BEACH COUNTY, FLORIDA.

Plat 79-230

0261-004

JUNE, 1987

ADD. BY [Signature] CHECKER BY [Signature]

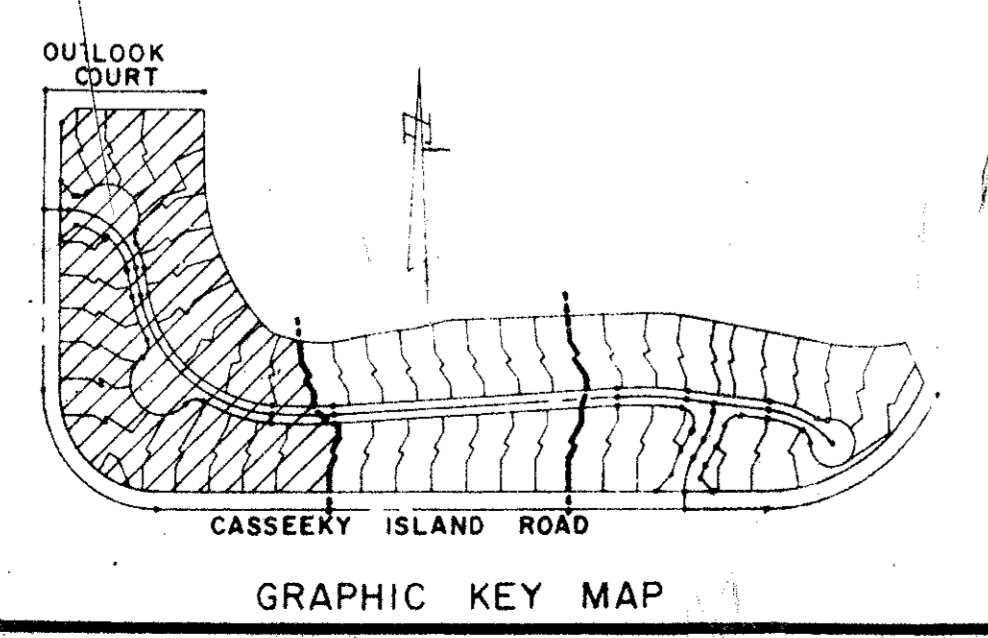


Table with columns: SUBDIVISION #, BLOCK, FLOOD ZONE, QUAD #, SE, PUD NAME.

Professional seal and title block for Lindaahl, Browning, Ferrari & Hellstrom, Inc. including drawing number 58/120, sheet 2 of 4, and date 22-May-87.